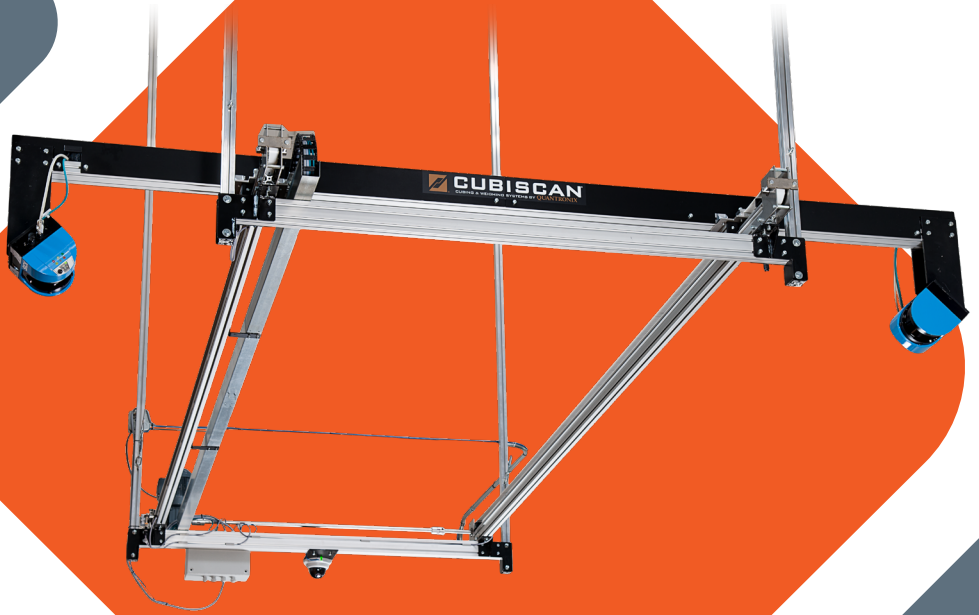


# CUBISCAN 1200-AKL



**INTHER**  
improving intralogistics

# CUBISCAN 1200-AKL INS & OUTS

The Cubiscan 1200-AKL is a large-scale, stationary dimensioning solution that can measure pallets, crates and large irregular products. It can work in conjunction with a heavy-capacity floor scale (or in a standalone position when volumetric calculations are sufficient). Its overhead-mounted sensor configuration provides a comprehensive view of the freight measurement area while allowing access from any direction. The measurement area can be enlarged for larger products and/or creating of multiple measurements stations.

## 1 Infrared sensing technology

Technology that gives the Cubiscan a high accuracy of up to 1 cm.

## 2 Camera

Complete your measurements with sharp pictures.

## 3 WMS data integration

Via a database connection, the master data will be directly updated in a host system.

## 4 Irregular items

Next to pallet dimensioning, the 1200-AKL can measure irregular products and crates.

## 5 Fast and easy process

One-touch measurements and ease-of-use design allow the user to achieve maximum efficiency.

## 6 Automated volume calculation

Weight based on volume calculation; additional features available to integrate a weight scale

## 7 Ceiling, wall, floor

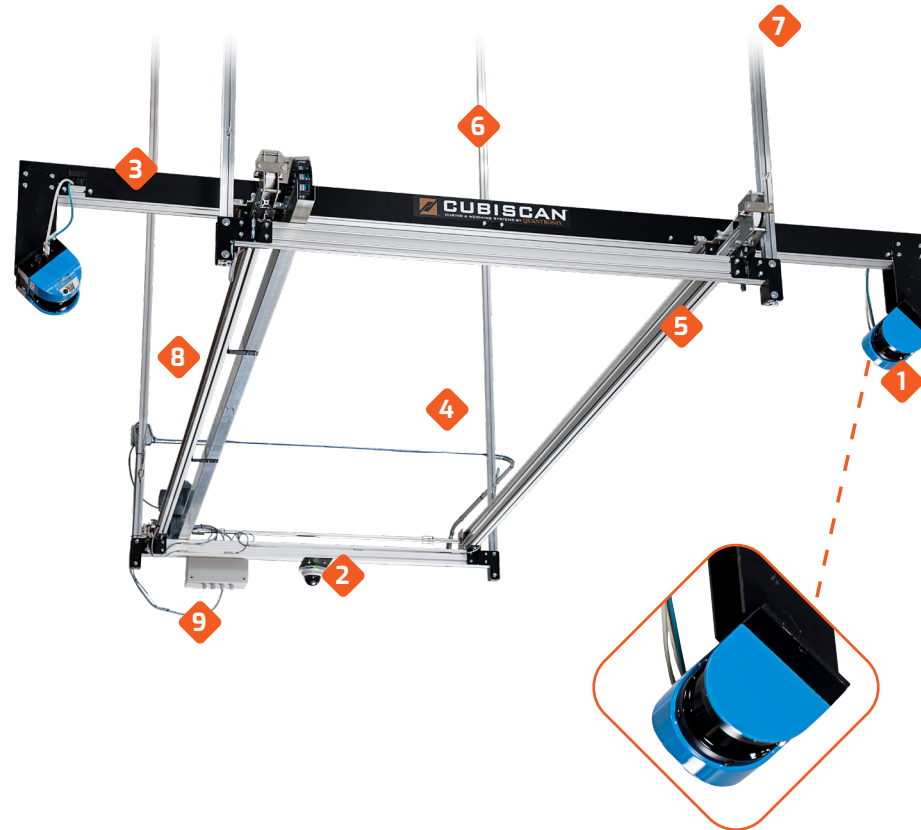
Attach the Cubiscan 1200 to the ceiling to optimize the measuring space or have it fit to any wall or floor space.

## 8 Low maintenance

Easy calibration makes for long-lasting performance and limited maintenance.

## 9 No manual input

No more manual data entry required, which leads to fewer errors and more reliable data.



# CUBISCAN 1200-AKL BENEFITS

## ◆ Fully automated measuring process ensures increased efficiency in collecting accurate master data

Traditional methods of manually measuring and weighing items are time-consuming and prone to errors. The automated measurements of the Cubiscan 1200-AKL in combination with a direct link to a host system create an efficient and reliable process. The Cubiscan 1200-AKL offers flexibility by offering options for a ceiling attachment, a wall mount or a floor stand. It comes with various options, including an integrated weight scale. The system can be set up either in a start-stop process or in continuous movement with the use of forklifts depending on customer needs.

## ◆ Reliable master data

Reliable master data is the base for every optimization in shipment, storage and packing materials. The automated database connection eliminates the risk of human mistakes, which is especially important when measuring pallets or large irregularly shaped products. With an accuracy of up to 1 cm, you can ensure savings on packaging materials and shipping costs. Next to this, you can optimize your storage in the warehouse or inside outgoing (container) shipments. The images feature allows you to perform an extra check when processing measured items into your host system.

# CUBISCAN 1200-AKL

## TECHNICAL DETAILS

### Measurement range

Length: up to 610 cm  
Width: up to 254 cm  
Height: up to 305 cm  
Weight capacity: based on volume calculations

### Measurement types

Regular-shaped items (pallets and crates)  
Irregular-shaped items

### Physical specifications

Length: 287 cm  
Width: 313 cm  
Height: 51 cm  
Weight: 193 kg

### Performance specifications

Operating speed: <15 seconds  
Dimensional increment: 1 cm



### Other

Data output: Serial (1), Ethernet (1), USB (1)  
Humidity: 0% to 85% non-condensing  
Measure sensor: Infrared sensing technology  
Operating temperature: -10° C to 40° C  
Power requirements: 95-240 VAC, 47-96 Hz

For more information on the **Cubiscan** feel free to reach out to us via e-mail [cubiscan@inthergroup.com](mailto:cubiscan@inthergroup.com), phone +31 622 626 147 or visit our website by scanning the QR code or going to [www.inthergroup.com/cubiscan1200akl](http://www.inthergroup.com/cubiscan1200akl).



+31 (0)478 502 575  
[www.inthergroup.com](http://www.inthergroup.com)  
[info@inthergroup.com](mailto:info@inthergroup.com)

**OTHER**  
improving intralogistics

